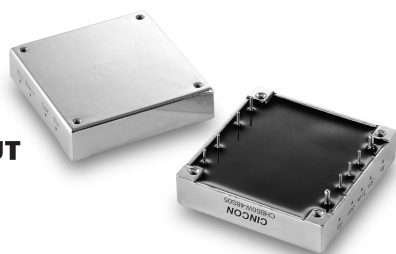


CHB75W

S E R I E S



37.5 TO 75 WATT WIDE INPUT DC-DC CONVERTERS SINGLE OUTPUT

Features

- 37.5W-75W Isolated Output
- Efficiency to 84%
- 300KHz Switching Frequency
- 4 : 1 Input Range
- Regulated Outputs
- Continuous Short Circuit Protection
- Five-Sided Metal Case
- Industry Standard Half-Brick Package

MODEL NUMBER	INPUT VOLTAGE	OUTPUT VOLTAGE	OUTPUT CURRENT	INPUT CURRENT NO LOAD	INPUT CURRENT FULL LOAD	%EFF	CASE
CHB75W-48S33	18-75 VDC	3.3 VDC	15 A	50 mA	1320 mA	78	HB
CHB75W-48S05	18-75 VDC	5 VDC	15 A	50 mA	1905 mA	82	HB
CHB75W-48S12	18-75 VDC	12 VDC	6.25 A	50 mA	1860 mA	84	HB
CHB75W-48S15	18-75 VDC	15 VDC	5 A	50 mA	1860 mA	84	HB
CHB75W-48S24	18-75 VDC	24 VDC	3.12 A	50 mA	1860 mA	84	HB

NOTE : 1. Nominal Input Voltage 48 VDC

Specifications

INPUT SPECIFICATIONS:

Input Voltage Range.....48V.....18-75V
 Undervoltage lockout 48Vin power up.....17V
 power down16V
 Positive Logic Remote ON/OFF^{1,4}
 Input Filter PI Type

OUTPUT SPECIFICATIONS:

Voltage Accuracy : ±1% max.
 Transient Response :25% Step Load Change<500µ sec.
 External Trim Adj. Range±10%
 Ripple & Noise, 20MHz BW, 3.3V & 5V 40mV RMS., max.
 100mV pk-pk, max.
 12V & 15V 60mV RMS., max.
 150mV pk-pk, max.
 24V 100mV RMS., max.
 240mV pk-pk, max.
 Temperature Coefficient..... ±0.03%/°C
 Short Circuit Protection.....Continuous
 Line Regulation¹±0.2% max.
 Load Regulation²±0.2% max.
 Over Voltage Protection trip Range, % Vo nom.....115-140%
 Current Limit110% ~160% Nominal Output

GENERAL SPECIFICATIONS:

Efficiency..... See Table
 Isolation Voltage Input/Output..... 1500VDC min.
 Input/Case..... 1500VDC min.
 Output/Case..... 1500VDC min.
 Isolation Resistance 10⁹ ohm min.
 Switching Frequency 300KHz, Typ.
 Operating Case Temperature -40°C to 100°C
 Storage Temperature -55°C to +105°C
 Thermal Shutdown, Case Temp. 100°C Typ.
 Dimensions 2.28x2.40x0.50 inches
 (57.9x61.0x12.7 mm)
 Case Material Aluminum

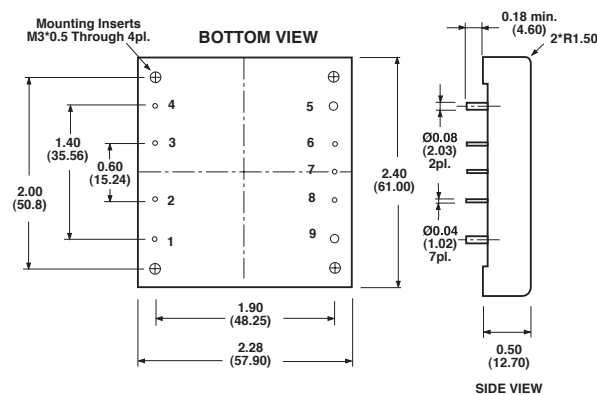
NOTE:

1. Measured From High Line to Low Line.
2. Measured From Full Load to Zero Load.
3. Logic Compatibility Open Collector Ref. to -Input
 Module ON Open Circuit
 Module OFF < 0.8Vdc
4. Suffix "N" to the Model Number with Negative Logic Remote ON/OFF.

CASE HB

All Dimensions In Inches(mm)

Tolerances	Inches	.XX±.02	.XXX±.010	Pin ±0.02
	Millimeters	.Xt±.5	.XX±.25	±0.5



PIN CONNECTION	
Pin	Function
1.	+Vin
2.	ON/OFF
3.	CASE
4.	-Vin
5.	-Vout
6.	-Sense
7.	Trim
8.	+Sense
9.	+Vout

