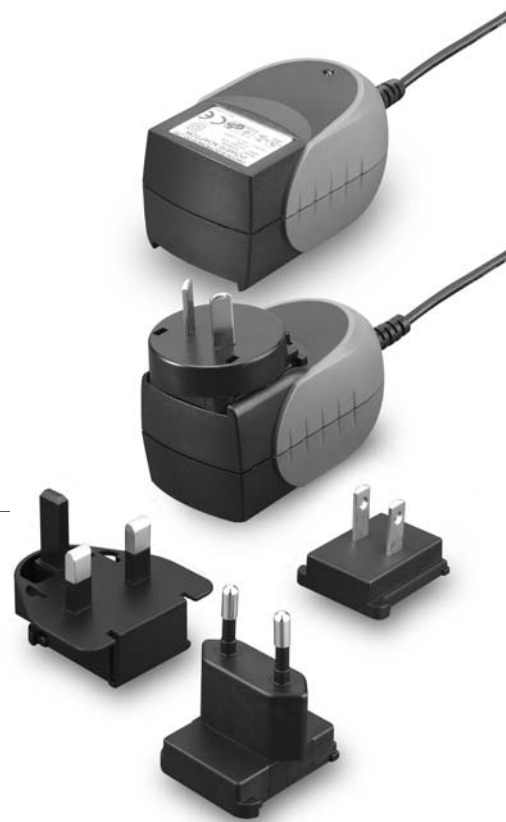


TR15RA

15W SWITCHING ADAPTER



Features

- Universal Input : 90 ~ 264Vac
- Continuous Short Circuit Protection
- Over Voltage Protection
- High Efficiency, 75% Typical
- AC Plug Can Be Change
- Meet EN55022 Class B

Specifications

INPUT CHARACTERISTICS:

Voltage 90 ~ 264Vac
 Frequency 47 to 63Hz
 Input Current 0.4A max
 Inrush Current 30A max @264Vac
 Conducted EMI..... CISPR/FCC Class B
 Isolation Input to output =4,242VDC
 Leakage Current..... 0.25mA max

ENVIRONMENTAL CHARACTERISTICS:

Operating Temperature 0 ~ 40°C
 Storage Temperature -20 ~ 85°C

OUTPUT CHARACTERISTICS:

Hold-up Time 10mS typ. @ 115Vac
 Short Circuit Protection Continuous (Auto Recovery)
 Over Voltage Protection Yes

MECHANICAL CHARACTERISTICS:

Dimensions 80.6x47.9x43.3mm³ (3.17x1.89x1.71 Inches)
 Weight 130g (0.29 Pounds)

MODEL	OUTPUT VOLTAGE	MAX. LOAD	MIN. LOAD	RIPPLE & NOISE	VOLTAGE ACCURACY	LINE REGULATION	LOAD REGULATION
TR15RA050	5 V	2.0A	0 A	1%	± 3%	± 1%	± 4%
TR15RA060	6V	1.7A	0 A	1%	± 2%	± 1%	± 3%
TR15RA090	9 V	1.4A	0 A	1%	± 2%	± 1%	± 2%
TR15RA120	12 V	1.1A	0 A	1%	± 2%	± 1%	± 2%
TR15RA150	15 V	1.0A	0 A	1%	± 2%	± 1%	± 2%
TR15RA180	18 V	830mA	0 A	1%	± 2%	± 1%	± 2%
TR15RA240	24V	625mA	0 A	1%	± 2%	± 1%	± 2%

NOTE:

1. Voltage setpoint at 60% load.
2. Add a 0.1uF ceramic capacitor and a 10uF E.L. capacitor to output for Ripple & Noise measuring @20MHz BW.
3. Line regulation measured from 100Vac to 240Vac , full load.
4. Load regulation measured from 60% to full load and from 60% to 20% load(60% +/- 40% load)

Mechanical Specification

UNIT: mm(Inches)

