

# SPU65 SERIES

## 65W Desk Top Switching Power Supplies For I.T.E.

### Description:

The SPU65 series of AC/DC switching mode power supplies provide 65 Watts of continuous output power.

All supplies are UL 94V-0 compliant, include IEC-320-C14 input for worldwide applications. All models meet FCC Part-15 class B and CISPR-22 class B emission Limits and are designed to comply with UL, C-UL, TUV and CE requirements. All units are 100% burned in and tested.



### Features:

- Wide Input Voltage 90 to 264 VAC, 47 to 63 Hz
- IEC-320-C14 Input Inlet
- Single to Triple Output
- Output Voltage Available From 3 VDC Thru 48 VDC
- Input Surge Current, Over Voltage and Over Load protection
- Splash proof
- One Year Warranty

### Safety Approvals :



### Electrical Characteristics:

Sym.	Parameter	Test Conditions	Min.	Typ.	Max.	Unit
Vin	Input Voltage		90		264	VAC
Fin	Input Frequency		47		63	Hz
Wo	Output Power Range	Vin=90 to 264VAC	0		80	W
Vo	Output Voltage Range		See rating chart			V
Io	Output Current Range		See rating chart			A
Iil	Input Current (Low Line)	Io=Full load, Vin=115VAC			1.9	A
Iih	Input Current (High Line)	Io=Full load, Vin=230 VAC			1.5	A
Irl	Low Line Inrush Current	Io=Full load, 25 c, Cool start, Vin=115VAC		12	15	A
Irh	High Line Inrush Current	Io=Full load, 25 c, Cool start, Vin=230VAC		26	30	A
Eff	Efficiency	Io=Full Load, Vin=230VAC	75	83	88	%
REG-i	Line Regulation	Io=Full Load		0.5	1	%
REG-o	Load Regulation	Vin=230VAC		3	5	%
OVP	Over Voltage Protection		112		132	%
OCP	Over Current Protection		110		150	%
Ttr	Transient Response	Io=Full Load to Half Load, Vin=100VAC			4	mS
Thold	Hold-Up Time	Io=Full Load, Vin=100VAC	16			mS
Ts	Start Up Time	Io=Full Load, Vin=100VAC	0.3	1	2	S
Vrn	Ripple & Noise (Peak to Peak)	Full Load, Vin=90VAC		0.5	1	%
Ilk	Safety Ground Leakage Current	Io=Full Load, Vin=240VAC		0.5	0.75	mA
Tc	Temperature Coefficient	All output	-0.04		0.04	%/ c

### Environmental :

Sym.	Parameter	Test Conditions	Min.	Typ.	Max.	Unit
Toper	Operating Temperature		0		70	c
Tstg	Storage Temperature		-40		85	c
Hr	Relative Humidity		5		95	%
Pd	Derated From 100% at +50 c Linearly to 50% at 70 c					

### Safety Specifications:

Sym.	Parameter	Test Conditions	Min.	Typ.	Max.	Unit
Vps	Dielectric Withstanding Voltage for Primary to secondary	Primary to secondary	4242			VDC
Vpg	Dielectric Withstanding Voltage for Primary to ground	Primary to ground	2121			VDC
Ri	Isolation Resistance	Test Voltage = 500VDC	50			M
CISPR	EMI requirements for CISPR-22	Vin=220VAC	B			CLASS
FCC	EMI requirements for FCC PART-15	Vin=110VAC	B			CLASS

# SPU65 SERIES

## 65W Desk Top Switching Power Supplies For I.T.E.

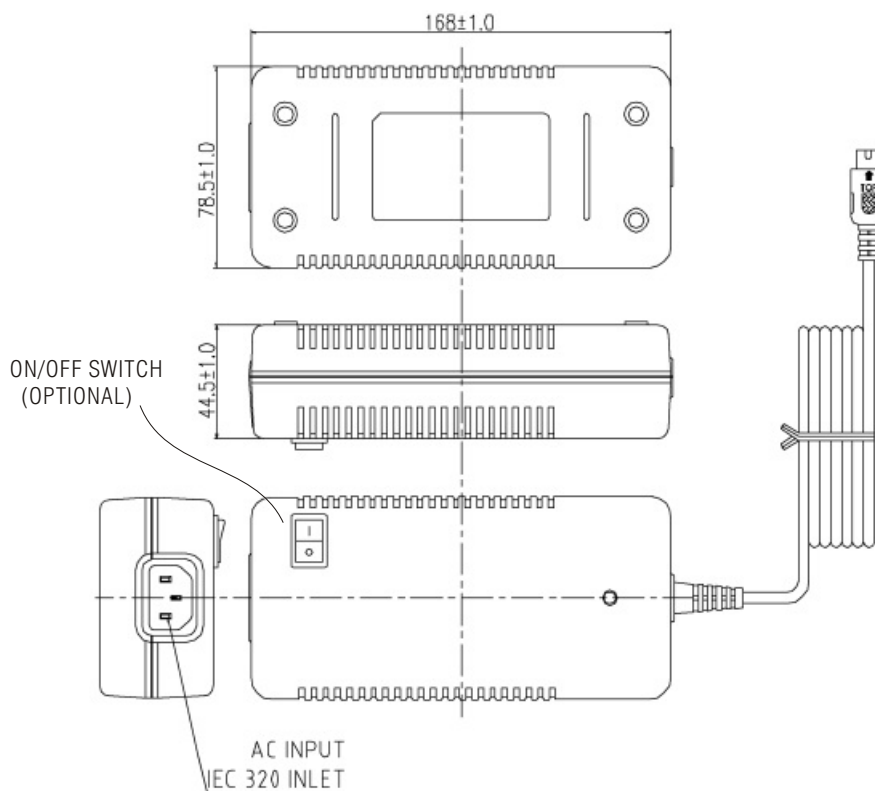
### Output Voltage And Current Rating Chart (Single Output) :

Model Number	Output Voltage	Output Current	Total Regulation	Maximum Output Power
SPU65-101	3 ~ 5 VDC	16.6 ~ 10.0 A	10%	50W
SPU65-102	5 ~ 6 VDC	13.0 ~ 10.8 A	7%	65W
SPU65-103	6 ~ 8 VDC	11.6 ~ 8.70 A	5%	69.6W
SPU65-104	8 ~ 11 VDC	9.37 ~ 6.81 A	5%	75W
SPU65-105	11 ~ 13 VDC	7.27 ~ 6.15 A	5%	80W
SPU65-106	13 ~ 16 VDC	6.15 ~ 5.00 A	5%	80W
SPU65-107	16 ~ 21 VDC	5.00 ~ 3.80 A	5%	80W
SPU65-108	21 ~ 27 VDC	3.80 ~ 2.96 A	5%	80W
SPU65-109	27 ~ 33 VDC	2.96 ~ 2.42 A	5%	80W
SPU65-110	33 ~ 40 VDC	2.42 ~ 2.00 A	5%	80W
SPU65-111	40 ~ 48 VDC	2.00 ~ 1.66 A	5%	80W

### Output Voltage And Current Rating Chart ( Multi Output ) :

Model Number	Output #1				Output #2				Output #3				Maximum Output Power
	Vonom	Iomin	Iomax	Regmax	Vonom	Iomin	Iomax	Regmax	Vonom	Iomin	Iomax	Regmax	
SPU65-200	+3.3V	0.5A	7A	5%	+12V	0.1A	2.75A	5%					56.1W
SPU65-201	+5V	0.5A	7A	5%	+12V	0.3A	3A	5%					60W
SPU65-202	+5V	0.5A	7A	5%	+15V	0.1A	3A	5%					60W
SPU65-203	+5V	0.5A	7A	5%	+24V	0.2A	2A	5%					60W
SPU65-204	+3.3V	0.5A	7A	5%	+5V	0.1A	3A	5%					38.1W
SPU65-215	+5V	0.5A	7A	5%	-24V	0.2A	2A	5%					60W
SPU65-300	+3.3V	0.3A	7A	5%	+12V	0.1A	3A	5%	-12V	0A	0.8A	5%	65W
SPU65-301	+5V	0.5A	6A	5%	+12V	0.1A	2.75A	5%	-5V	0A	0.325A	5%	65W
SPU65-302	+5V	0.5A	6A	5%	+12V	0.1A	2.125A	5%	-12V	0A	0.325A	5%	59.4W
SPU65-303	+5V	0.5A	6A	5%	+15V	0.1A	2.125A	5%	-15V	0A	0.208A	5%	65W
SPU65-304	+5V	0.5A	7A	5%	+24V	0.1A	2A	5%	-24V	0A	0.5A	5%	65W
SPU65-305	+5V	0.5A	6A	5%	+24V	0.1A	1.25A	5%	-12V	0A	0.416A	5%	65W
SPU65-306	+3.3V	0.5A	7A	5%	+12V	0.1A	3A	5%	-5V	0A	0.8A	5%	65W

### Mechanical Specifications :



#### Note:

1. Dimensions are shown in mm.
2. Weight: 570-750gs approx.
3. Optional output connectors: See page Appendix.